



STUDYINBALI

# COURSE PROGRAM TROPICAL ARCHITECTURE, INTERIOR & GREEN DESIGN

---



**IDB BALI**  
INSTITUT DESAIN & BISNIS BALI







## TROPICAL ARCHITECTURE, INTERIOR & GREEN DESIGN

The Tropical Architecture, Interior & Green Design program is an immersive 15-week course designed to give students a comprehensive understanding of tropical architecture and sustainable design in one of the world's most unique and vibrant environments—Bali, Indonesia. Participants will explore the harmony between traditional Balinese architectural principles and modern design concepts, with a focus on sustainable practices using natural materials. Through lectures, workshops, and excursions, students will dive deep into the concepts of indoor-outdoor living, resort and hospitality design, and furniture creation, all while being surrounded by Bali's rich cultural and artistic heritage. This program emphasizes hands-on experience with local craftsmen, site visits to renowned architectural landmarks, and innovative green design strategies that reflect Bali's commitment to sustainability.

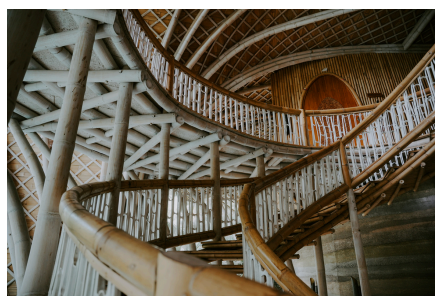
By the end of the course, participants will have developed essential skills and insights into creating environmentally conscious designs that integrate seamlessly with tropical climates and local cultures.

### STUDY DESTINATION: BALI, INDONESIA

Bali is more than just a picturesque island—it is an architectural wonderland where traditional craftsmanship meets modern innovation. As one of the world's leading destinations for eco-friendly design and tropical architecture, Bali offers a unique learning environment where natural beauty, cultural heritage, and sustainability converge.

The island's distinct approach to architecture is shaped by its tropical climate, which fosters the concept of indoor-outdoor living spaces, seamlessly blending buildings with nature. With its renowned eco-resorts, bamboo structures, and creative use of natural materials, Bali stands as a global leader in sustainable design practices. The deep-rooted Balinese philosophy of harmony with nature, or Tri Hita Karana, is at the core of both traditional and contemporary architectural styles, making it the perfect setting for those eager to explore the principles of green architecture.

Throughout the program, students will not only engage with Bali's unique design philosophy but also gain hands-on experience through visits to local architecture firms, eco-villages, and sustainable building projects. From exploring the intricate details of Balinese temples to witnessing the innovation behind bamboo construction in the world-famous Green School, Bali offers an unparalleled opportunity to learn how architecture can harmonize with the environment. This vibrant and sustainable landscape makes Bali the ideal destination for aspiring architects and designers who are passionate about tropical architecture and green design.





## HOST INSTITUTION: IDB BALI

The Institut Desain dan Bisnis Bali (IDB Bali) is a renowned private university located in Denpasar, Bali, specializing in design and business education. Established in 2013, IDB Bali has rapidly grown into a leader in creative and innovative education, offering a variety of design-focused programs, including architecture, interior design, fashion design, and digital business. The institute is committed to fostering creativity and entrepreneurship, making it an ideal partner for our Tropical Architecture, Interior & Green Design program.

IDB Bali is equipped with state-of-the-art facilities, including a creative gallery to showcase student work, modern lecture halls, and hands-on workshop spaces. The campus is designed to inspire collaboration and innovation, creating a vibrant learning environment for both local and international students. With its unique blend of traditional Balinese wisdom and modern academic approaches, IDB Bali offers the perfect setting for students to explore sustainable architecture and green design in a tropical context.

In addition to its academic excellence, IDB Bali promotes a holistic learning experience through excursions, cultural exchanges, and opportunities to work on real-world projects, ensuring that students gain practical skills and deep insights into the world of tropical architecture and sustainable living.





## IMPORTANT ISSUES

### Application Deadlines:

- Application deadline: 31 December (Summer Class); 15 June (Winter Class)

### Class Schedules:

- Summer Class: April – July; Winter Class: October – January

### Study Fees:

- Study Fees: Regular € 2340 , Early Bird € 2190
- The study fees include lectures, workshops, welcoming & farewell event, weekly academic and cultural excursions, airport pickup, and other student services.
- The study fees EXCLUDE living costs, visa costs, accommodations, travel costs, and transportation

## MODULES

1. Tropical Interior & Southeast Asian Architecture – 5 ECTS
2. Furniture Design – 5 ECTS
3. Natural Materials & Green Design – 5 ECTS
4. Architectural Sketching & Illustration – 5 ECTS
5. Design Project/Studio: Villa, Resort & Hospitality Design – 8 ECTS
6. Indonesian Language & Culture of Bali – 2 ECTS

[International Credit Transfer Table](#)

## WORKLOAD

CODE	MODULE	CLASS		CONSULTATION		GUEST LECTURE	EXCURSION	WORKSHOP	SELF-STUDY	PAPERS & EXAMINATION	TOTAL WORKLOAD	CREDITS
		weekly	total	weekly	total							
TA1	<b>Tropical Interior &amp; Southeast Asian Architecture</b>	2	24	0.5	10	5	28	17	56	10	150	<b>5</b>
TA2	<b>Furniture Design</b>	2	24	0.5	10	17	19	15	50	15	150	<b>5</b>
TA3	<b>Natural Materials &amp; Green Design</b>	2	24	0.5	10	19	20	24	47	10	150	<b>5</b>
TA4	<b>Architectural Sketching &amp; Illustration</b>	2	24	0.5	10	20	15	20	46	10	150	<b>5</b>
TA5	<b>Design Project/Studio: Villa, Resort &amp; Hospitality Design</b>	4	48	1	20	25	20	20	77	30	240	<b>8</b>
LC1	<b>Indonesian Language &amp; Culture of Bali</b>	2	24	0.5	5	5	6	5	10	5	60	<b>2</b>







## **COURSE STRUCTURE**

The Tropical Architecture, Interior & Green Design program is a 15-week course that starts with a welcoming dinner on the Saturday before classes begin. The first week includes orientation, followed by regular classes with lectures, workshops, and excursions.

A two-week semester break falls around weeks 7 and 8 (or weeks 8 and 9), allowing students to explore Bali or Indonesia. Classes resume after the break, leading to final project presentations in week 14 and a graduation ceremony in week 15.

## **WEEKLY EXCURSION**

An academic excursion is organized once a week, typically on Thursdays or Fridays. These excursions are a vital part of the Tropical Architecture, Interior & Green Design program, offering students the opportunity to connect classroom learning with real-world applications. Participation in these excursions is mandatory and forms part of the 85% attendance requirement.

## **EXCURSIONS & WORKSHOPS (tentative!)**

- Traditional Balinese & Temple Visit
- Architectural Sketching Workshop
- Biji World, Gdas & Titi Batu: Mix modern & Traditional Architecture with Architect Pak Oka
- Guest Lecture: Eco Mantra
- Workshop on 3D & AI in Architecture with George Hutchins
- Visit to Green Village & Studio IBUKU
- Bamboo Construction Workshop with Asali Bali
- Visit to Ulaman Eco Resort
- Visit to Bio Arc Project
- Guided Villa Tour with Architect
- Architecture Studio visit

## **ASSESSMENT & MARKING**

Students must meet all assessment criteria to be eligible to receive final markings. The criteria include:

- Minimum attendance in 85% of the classes, workshops, and excursions. (Students must sign an attendance list each time they participate in classes and excursions.)
- Submitting all required assignments
- Sitting for exams
- Showing active participation and ability in soft skills





### **Uniform Modules for All Participants:**

All modules are the same for every participant, regardless of their background, skills, or level of study. We believe this approach is effective because the content delivered is unique to the study location, focusing on the architecture, culture, and environmental conditions of Bali, Indonesia, and Southeast Asia. These aspects provide new and enriching learning experiences for all participants, regardless of their prior knowledge or expertise. Therefore, we ensure that the content in all modules remains consistent for all participants, allowing everyone to engage with fresh and locally relevant material.

### **Differentiated Assessment in Studio Project:**

However, in the Design Studio Project, the assessment will be tailored to each student's background and level of study. For example, a first-year student will have different project requirements and assessment criteria compared to a master's student or a professional. This ensures that students are assessed fairly based on their individual experience and academic level, while still challenging them to grow in their design skills.

## **GRADING AND CURRICULUM**

Academic systems vary across countries. In Indonesia, tertiary education is overseen by the Ministry of Higher Education & Research. While the full-semester study abroad program does not grant a degree, it offers students up to 30 credit points (ECTS), transferable to home universities. To earn the full 30 ECTS, students must actively participate in classes, case studies, guest lectures, academic excursions/site visits, and student projects.

A minimum attendance rate of 85% is required for eligibility to sit for exams. Absences of more than 3 weeks will result in deregistration from the program. Attendance is mandatory starting from the first day of orientation.

## **CERTIFICATES**

Students will receive their official certificates from IDB Bali during the farewell event, or digitally by email, approximately 4 weeks after the final exams. Upon successfully completing all course requirements, students will be awarded the following certificates:

- A certificate stating that the student has completed the full 15-week program.
- An Academic Transcript detailing the student's performance throughout the course, with final grades included.
- A certificate of participation in workshops and, upon request, specific academic excursions.







## ELIGIBILITY

The Tropical Architecture, Interior & Green Design program at IDB Bali is designed for a wide range of participants, welcoming both students and professionals who are passionate about architecture, interior design, and sustainable practices. Whether you're a student seeking academic enrichment or a professional looking to refine your design skills, this program offers valuable insights into tropical architecture and green design.

The program is open to:

- **Bachelor's or Master's Students:** Ideal for students in the fields of architecture, interior architecture, design, or related disciplines.
- **Professionals in Architecture or Design:** Perfect for those already working in architecture, interior design, or sustainable construction who wish to deepen their knowledge of tropical and green design principles.
- **Aspiring Architects and Designers:** Whether you're at the beginning of your design journey or looking to enhance your skills, this program provides practical experience and creative development opportunities.

Additionally, anyone with a strong interest in architecture or green design, even without formal training, is encouraged to apply. The program provides hands-on experience and a deep understanding of sustainable architecture, enriched by Bali's unique environmental and cultural context.

Participants will benefit most if they have experience or interest in:

- **Tropical Architecture and Design:** For those focused on creating structures that harmonize with tropical environments.
- **Sustainable Building Practices:** Ideal for those interested in using natural materials and eco-friendly methods in architectural design.
- **Interior Design:** A great fit for those looking to integrate sustainability with interior spaces, focusing on furniture design and interior architecture.
- **Green Design and Construction:** Suitable for individuals eager to learn about sustainable development and green design principles in tropical climates.

Whether you aim to create innovative design solutions or simply want to deepen your understanding of tropical architecture, this program offers the essential skills and knowledge needed to excel in today's environmentally conscious design landscape.



# 1. TROPICAL INTERIOR & SOUTHEAST ASIAN ARCHITECTURE

---

Schedule	weekly
Workload	120-150 hours in total
Credit Points	5 CP
Department	Interior Design
Location	IDB Bali Campus

## COURSE DESCRIPTION

This module offers a comprehensive introduction to the principles of Tropical Interior Design and Southeast Asian Architecture, with a focus on how traditional socio-cultural values shape contemporary design in tropical climates. Students will explore architectural styles from Southeast Asia, particularly Bali, learning how local materials, environmental factors, and cultural philosophies influence both interior and exterior spaces.

The module includes both theoretical classes and practical assignments, with an emphasis on sustainable architecture and the blending of traditional design concepts with modern innovations. Through site visits, students will also experience firsthand how Balinese architecture harmonizes with its natural surroundings.

## LEARNING OBJECTIVES

- Gain an understanding of Tropical Interior Design principles in the context of Southeast Asian Architecture.
- Analyze the socio-cultural influences on architecture, with a particular focus on Balinese design traditions.
- Develop skills in integrating traditional and contemporary architecture, using natural materials and sustainable practices.
- Enhance their ability to design residential and commercial spaces that reflect tropical environmental conditions.
- Learn through site analysis and hands-on projects how to apply architectural theory to real-world design challenges.

## ASSESSMENT

The assessment for this module will consist of:

- **Project Work:** Students will complete a resort and hospitality design project, integrating interior, architecture, and landscape elements. Site selection and analysis will be required for the project.
- **Assignments:**
  1. A case study of Southeast Asian architecture or the built environment (report and presentation).
  2. Analysis of the transformation of Balinese contemporary interior architecture (report and presentation).
  3. A re-design of a residential or commercial building using Balinese design principles (design report and presentation).





- **Excursions:** Visits to traditional Balinese houses, resorts, and commercial buildings to analyze architecture in context.
- **Lectures & Discussions:** Including socio-cultural aspects, Balinese design philosophies, and local regulations.
- **Participation:** Active participation in classes, discussions, and excursions is essential, with a minimum attendance requirement of 85%.

**Assessment Breakdown:**

- 25%: First assignment (group work)
- 30%: Second assignment (individual project presentation)
- 45%: Final design project (individual)



## 2. FURNITURE DESIGN

---

Schedule	weekly
Workload	120-150 hours in total
Credit Points	5 CP
Department	Interior Design
Location	IDB Bali Campus

### COURSE DESCRIPTION

This module delves into the design, production, and craftsmanship of furniture in Bali, with a focus on traditional Balinese design principles and their influence on contemporary furniture design. Students will study various furniture styles, materials, and construction techniques, exploring how sustainability can be integrated into furniture design. The course combines theoretical learning with practical, hands-on experience through site visits to local furniture manufacturers and workshops.

Students will engage with the local craftsmanship traditions and learn how furniture can reflect both cultural heritage and modern design aesthetics while focusing on sustainable practices.

### LEARNING OBJECTIVES

By the end of this module, students will:

- Understand the traditional Balinese design principles and their application in furniture design.
- Explore the use of sustainable materials and construction techniques in furniture making.
- Analyze furniture design trends and the evolution of Balinese furniture styles over time.
- Develop practical skills through hands-on workshops and create their own furniture designs, integrating traditional craftsmanship with contemporary ideas.
- Gain insights into local manufacturing processes by visiting furniture workshops and industry sites.

### ASSESSMENT

The assessment for this module will consist of:

- **Student Project:** Design a set of furniture that aligns with their broader studio project, integrating interior and architectural design elements.
- **Assignments:**
  1. Classification of Balinese Furniture Design: Analyze various furniture styles based on period, function, material, and craftsmanship (report and presentation).
  2. Furniture Manufacture Analysis: Visit a furniture manufacturer, analyze the production process, and compare traditional and contemporary methods (report and presentation).
  3. Furniture Design and Detail Development: Integrate furniture design into the overall architectural project, with a focus on detail, construction, and material selection (design report and presentation).





- **Excursions:** Visits to traditional and contemporary furniture manufacturers, allowing students to see furniture-making processes in action.
- **Lectures & Discussions:** Covering Balinese furniture design philosophies, sustainable material usage, and modern manufacturing techniques.
- **Participation:** Active participation in all sessions is required, with a minimum attendance of 85%.

Assessment Breakdown:

- 30%: First assignment (group work)
- 30%: Second assignment (group project presentation)
- 40%: Final furniture design project (individual)



## 3. NATURAL MATERIALS & GREEN DESIGN

---

Schedule	weekly
Workload	120-150 hours in total
Credit Points	5 CP
Department	Interior Design
Location	IDB Bali Campus

### COURSE DESCRIPTION

This module focuses on the use of natural materials in tropical architecture and interior design, with an emphasis on sustainable practices and green design principles. Students will explore how natural resources, such as bamboo, wood, and other local materials, are implemented in sustainable construction and design. The course emphasizes the environmental, social, and economic benefits of green design and how it can be applied in tropical settings.

Students will engage in both theoretical learning and practical application, visiting local manufacturers and participating in hands-on workshops that focus on sustainable building methods and material selection.

### LEARNING OBJECTIVES

By the end of this module, students will:

- Understand the characteristics and properties of natural materials commonly used in tropical architecture.
- Explore green design principles and their application in both interior and architectural design.
- Analyze the sustainability and environmental impact of material choices, considering local and global contexts.
- Learn about sustainable construction techniques using natural materials, such as bamboo and reclaimed wood.
- Apply their knowledge in design projects that prioritize eco-friendly and resource-efficient solutions

### ASSESSMENT

- **Student Project:** Select and implement natural materials into a tropical architecture and interior design project, incorporating green design principles.
- **Assignments:**
  1. Material Classification: Analyze and categorize natural materials that support sustainable development (report and presentation).
  2. Material Development and Manufacturing: Visit a local manufacturer to study material production and development (report and presentation).
  3. Sustainable Design Implementation: Integrate natural materials into the broader architectural or interior design project, considering sustainability, detail, and construction (design report and presentation).



- **Excursions:** Visits to local manufacturers specializing in sustainable materials, such as bamboo and wood.
- **Lectures & Discussions:** Covering green design principles, material selection, and the challenges of implementing sustainable practices in tropical architecture.
- **Participation:** Active participation in all sessions is required, with a minimum attendance of 85%.

Assessment Breakdown:

- 30%: First assignment (individual)
- 30%: Second assignment (group project presentation)
- 40%: Final design project (individual)



## 4. ARCHITECTURAL SKETCHING & ILLUSTRATION

---

Schedule	weekly
Workload	120-150 hours in total
Credit Points	5 CP
Department	Interior Design
Location	IDB Bali Campus

### COURSE DESCRIPTION

This module introduces students to the theories and techniques of architectural sketching and illustration, with an emphasis on both traditional manual sketching and modern digital tools. The course includes Balinese art styles and architectural representation methods, as well as digital techniques using software like Adobe Photoshop, Adobe Illustrator, and 3D modeling. Students will explore the artistic and technical aspects of architectural illustration, learning how to visually communicate their designs effectively.

Students will develop skills in rendering and illustrating architectural ideas through practical exercises and hands-on projects, enhancing both their manual and digital drawing abilities.

### LEARNING OBJECTIVES

- Master the theories and techniques of architectural sketching, with a focus on Balinese art and design styles.
- Develop the ability to illustrate architectural concepts both manually and digitally.
- Learn to use digital sketching and illustration tools such as Adobe Photoshop, Adobe Illustrator, and basic 3D modeling software.
- Understand the use of AI in Architecture and 3D Visualisation
- Enhance their ability to visualize and present architectural ideas through sketches, renderings, and illustrations.
- Apply their skills in creating detailed architectural illustrations for their design projects.

### ASSESSMENT

- **Student Project:** Develop a complete set of architectural sketches and digital illustrations for a design project, combining traditional and modern techniques.
- **Assignments:**
  1. Line Quality and Rendering: Evaluate the quality of manual sketches and their application in architectural rendering (presentation).
  2. Material, Color, and Texture Application: Use digital tools to enhance illustrations with realistic materials, colors, and textures (design report and presentation).





- **Excursions:** Outdoor sketching sessions at Balinese Traditional Villages or heritage sites to capture real-life architecture and cultural environments.
- **Lectures & Discussions:** Covering both manual and digital sketching techniques, Balinese art styles, and the role of architectural illustration in design.
- **Participation:** Active participation in all sessions, including outdoor sketching, is mandatory with a minimum attendance of 85%.

**Assessment Breakdown:**

- 30%: First assignment (individual)
- 30%: Second assignment (group project presentation)
- 40%: Final project presentation (individual)



## 5. DESIGN PROJECT/STUDIO: VILLA, RESORT & HOSPITALITY DESIGN

---

Schedule	weekly
Workload	220-240 hours in total
Credit Points	8 CP
Department	Interior Design
Location	IDB Bali Campus

### COURSE DESCRIPTION

In this capstone module, students will apply the knowledge and skills gained throughout the program to complete a comprehensive design project focused on Villa, Resort & Hospitality Design in tropical climates. The module emphasizes the development of sustainable, culturally sensitive, and innovative architectural solutions that reflect the unique conditions of Bali and Southeast Asia.

Students will engage in a full design process, from site analysis and concept development to detailed architectural drawings and final presentations. The project will integrate elements of interior design, architecture, and landscape, with a focus on balancing traditional Balinese design principles with modern hospitality needs and sustainable practices.

### LEARNING OBJECTIVES

By the end of this module, students will:

- Develop a complete design concept for a villa, resort, or hospitality project in a tropical environment.
- Apply sustainable design principles to architecture and interior design, emphasizing the use of natural materials and eco-friendly construction techniques.
- Incorporate Balinese cultural elements and local traditions into the design, ensuring that the project reflects the unique cultural context of Bali.
- Create detailed architectural drawings, sketches, and models that reflect their design ideas and demonstrate technical proficiency.
- Present their final project in a professional manner, using visual aids, models, and digital presentations to communicate their vision.

### ASSESSMENT

- **Design Project:** Students will work on an individual project to design a villa, resort, or hospitality structure that integrates interior, architecture, and landscape elements. The project will include:
  1. **Site Analysis and Concept Development:** Analyze a real or hypothetical site, considering environmental, cultural, and logistical factors.
  2. **Design Development:** Create architectural drawings, sketches, and 3D models that reflect the design concept.
  3. **Final Presentation:** Present the completed project to a panel of instructors and peers, including detailed plans, renderings, and a design portfolio.



- **Portfolio:** Students will prepare a comprehensive A3-size portfolio documenting their design process, including research, concept sketches, and final design elements.
- **Consultations:** Regular consultation sessions with instructors will help guide the development of the design project.

**Assessment Breakdown:**

- 25%: Site analysis and concept development (individual)
- 35%: Design development (individual)
- 40%: Final presentation and portfolio (individual)



## 6. INDONESIAN LANGUAGE & CULTURE OF BALI

---

Schedule	weekly
Workload	50-60 hours in total
Credit Points	2 CP
Department	Interior Design Department
Location	IDB Bali Campus

### COURSE DESCRIPTION

This module provides students with essential knowledge of the Indonesian language and an in-depth understanding of Balinese culture, which plays a vital role in the architectural and design landscape of Bali. Students will learn fundamental communication skills in Indonesian, enabling them to engage more effectively with locals during excursions and practical workshops. Additionally, this module explores Balinese cultural practices, religious beliefs, and their influence on architectural styles and design philosophies in Bali.

Through a mix of language instruction and cultural immersion, students will gain a deeper appreciation of the unique context in which they are studying and designing.

### LEARNING OBJECTIVES

By the end of this module, students will

- Acquire basic proficiency in Indonesian language, including common phrases, greetings, and simple conversations.
- Gain insights into Balinese culture, religious practices, and how these influence design and architecture.
- Understand the role of cultural traditions in shaping the built environment in Bali.
- Develop cross-cultural communication skills to enhance interactions during site visits, workshops, and excursions.
- Explore how Balinese spiritual and cultural beliefs are reflected in local architectural styles.

### ASSESSMENT

- **Assignments:**
  1. **Indonesian Language Exercises:** Practice basic Indonesian vocabulary, grammar, and conversational skills (short assignments).
  2. **Cultural Reflection:** Analyze the influence of Balinese culture and traditions on architectural designs in a short reflection paper.





- **Exams:**

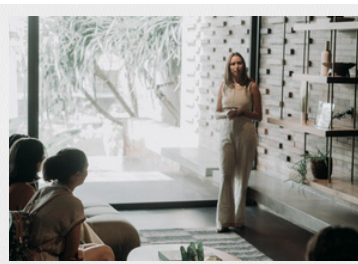
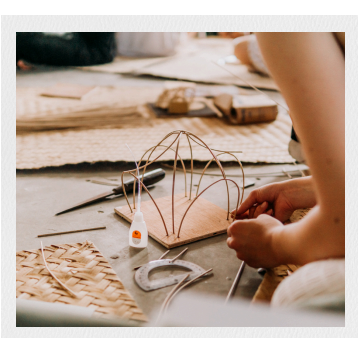
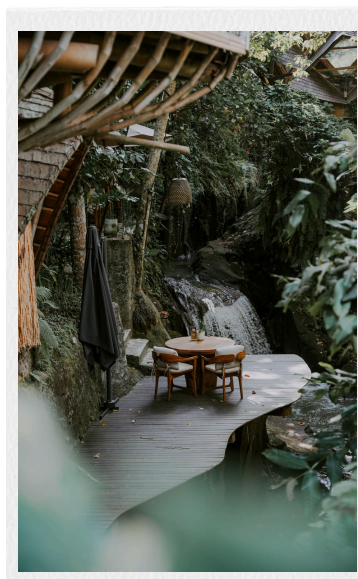
1. **Midterm Written Test:** A written examination testing students' language skills and cultural understanding.
2. **Final Written/Oral Test:** An exam evaluating the student's proficiency in Indonesian and knowledge of Balinese culture.

- **Participation:** Active participation in cultural workshops and discussions is required, with a minimum attendance rate of 85%.

**Assessment Breakdown:**

- 30%: Short assignments (individual)
- 35%: Midterm written test (individual)
- 35%: Final written/oral test (individual)













# Contact Information

## STUDYINBALI



Your journey begins with us! At StudyInBali, we're here to guide you through the entire process – from applications to personalized consultancy. We'll make sure everything is set before you embark on your adventure. Got questions about visas, registration, or study fees? We've got you covered – just reach out!

-  [hello@studyinbali.com](mailto:hello@studyinbali.com)
-  [www.studyinbali.com](http://www.studyinbali.com)
-  +49 178 8189255 (WhatsApp)
-  @studyinbali

