



STUDYINBALI

COURSE PROGRAM TROPICAL ARCHITECTURE SUMMER SCHOOL



IDB BALI
INSTITUT DESAIN & BISNIS BALI





TROPICAL ARCHITECTURE

Embark on a 4-week journey into the heart of Southeast Asian design with the Tropical Architecture Summer School in Bali. Hosted by StudyInBali at Institut Design & Business Bali (IDB Bali), this intense and immersive program offers deep insight into the tropical architecture of Bali through a dynamic mix of in-class lectures, hands-on workshops, and cultural excursions. You'll explore traditional Balinese architecture, interior design, and sustainable practices while visiting architectural projects, studios, and Bali's rich cultural heritage sites. Meet professional architects, engage in stimulating discussions, and experience firsthand the harmony between architecture and nature in Bali. At the core of this program is the design project, which serves as the heart of the summer school experience. This individual project combines everything you've learned over the four weeks and will be presented at the end of the course, showcasing your creativity and skills in tropical architecture. Join us for a transformative learning adventure in Bali, and earn transferable credits while deepening your understanding of design in one of the world's most unique settings.

IMPORTANT ISSUES

Class Schedules:

- Summer School: August (Held once a year)

Application Deadline:

- 15 June

Duration: 4 weeks

Study Fees:

- Regular: € 1450*
- Early Bird € 1350*

Credit Points:

- max. 12 ECTS

University: IDB Bali

Accommodation: Options available in our student villas

*The study fees EXCLUDE living costs, visa costs, accommodations, travel costs, and transportation

STUDY DESTINATION: BALI, INDONESIA

Bali is a global leader in tropical architecture and sustainable design, making it the ideal destination for the Tropical Architecture Summer School. The island's unique approach to architecture is deeply influenced by its tropical climate and the Balinese philosophy of Tri Hita Karana, which emphasizes harmony with nature. This blend of cultural heritage and cutting-edge eco-friendly design creates a rich, immersive environment for studying green architecture. Bali's architecture is a fusion of tradition and modern innovation, with its iconic bamboo structures, eco-resorts, and seamless indoor-outdoor living spaces. The island's commitment to sustainability and its breathtaking natural surroundings make it a perfect place for anyone passionate about architecture to experience firsthand how design can enhance and respect the environment. Exploring Bali's architectural landscape offers invaluable insights, making the island an unparalleled study destination for those eager to deepen their understanding of tropical and sustainable design.





HOST INSTITUTION: IDB BALI

Institut Desain dan Bisnis Bali (IDB Bali) is a distinguished private university located in Denpasar, Bali, specializing in creative and business education. Since its establishment in 2013, IDB Bali has quickly emerged as a leader in innovative design-focused programs, including architecture, interior design, fashion design, and digital business. With a strong commitment to nurturing creativity and entrepreneurship, IDB Bali is the ideal partner for the Tropical Architecture Summer School. The campus features modern facilities designed to foster collaboration and creativity, including a student gallery, cutting-edge lecture halls, and hands-on workshop spaces. This vibrant environment blends traditional Balinese wisdom with contemporary academic practices, offering students an inspiring setting to explore sustainable architecture and green design in the heart of Bali. Beyond academics, IDB Bali enriches the learning experience with cultural exchanges, real-world projects, and excursions that provide students with practical skills and a deeper understanding of tropical architecture and eco-friendly living.





MODULES

1. Balinese Landscape and Architecture (2 CP)
2. Interior Design & Amenities (2 CP)
3. Bali Resort and Hospitality (2 CP)
4. Green Design (2 CP)
5. Studio Project (4 CP)

[International Credit Transfer Table](#)

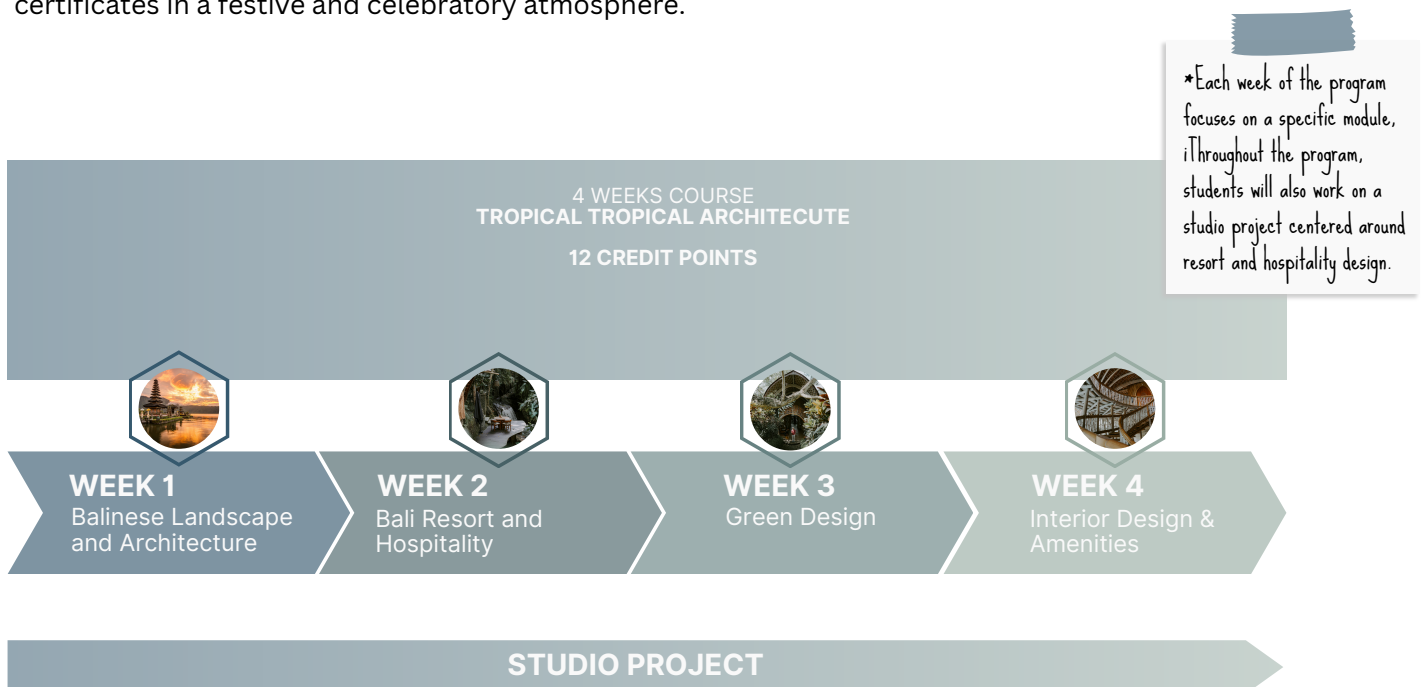
COURSE STRUCTURE

The Tropical Architecture Summer School is an intensive four-week short course that begins with a welcoming dinner on the Saturday evening before classes start. Each week of the program focuses on a specific module, allowing students to dive deep into different aspects of tropical architecture.

Classes are structured to provide a balance of theory and hands-on learning. Mondays and Tuesdays are dedicated to theoretical lectures held on the IDB Bali campus, while Wednesdays and Thursdays are typically reserved for excursions and workshops, with occasional Fridays also allocated for these activities.

Throughout the program, students will also work on a studio project centered around resort and hospitality design. This group project runs concurrently with the modules, giving students the opportunity to apply what they learn each week. At the end of the course, students will present their project, showcasing their creativity and understanding of tropical architecture.

The program concludes with a graduation ceremony on the final day, where students receive their certificates in a festive and celebratory atmosphere.





EXCURSIONS & WORKSHOPS

An academic excursion is organized once a week, typically on Thursdays or Fridays. These excursions are a vital part of the Tropical Architecture, InExcursions and workshops are a vital part of the Tropical Architecture Summer School, designed to provide an immersive learning experience beyond the classroom. Each week, excursions and workshops are carefully selected to align with the specific topic being covered, whether it's Balinese landscape and architecture, resort design, or green and interior design principles.

Throughout the course, students will engage in a diverse range of activities, from project visits and studio tours to meetings with architects and cultural heritage explorations. This hands-on approach ensures that students gain a deep, practical understanding of tropical architecture, not just through lectures but by seeing real-world applications in Bali's rich architectural landscape. These experiences offer a well-rounded view of how traditional and modern designs harmonize with the environment, allowing students to fully immerse themselves in Bali's unique architectural world. Participation in these excursions is mandatory and forms part of the 85% attendance requirement.

EXCURSIONS & WORKSHOPS (tentative!)

- Traditional Balinese Village & Temple Visit
- Architectural Sketching Workshop
- Biji World, Gdas & Titi Batu: Mix modern & Traditional Architecture with Architect Pak Oka
- Guest Lecture: Eco Mantra
- Workshop on 3D & AI in Architecture with George Hutchins
- Visit to Green Village & Studio IBUKU
- Bamboo Construction Workshop with Asali Bali
- Visit to Ulaman Eco Resort
- Guided Villa Tour with Architect
- Architecture Studio visit

ASSESSMENT & MARKING

Students must meet all assessment criteria to be eligible to receive final markings. The criteria include:

- Minimum attendance in 85% of the classes, workshops, and excursions. (Students must sign an attendance list each time they participate in classes and excursions.)
- Submitting all required assignments
- Sitting for exams
- Showing active participation and ability in soft skills





Uniform Modules for All Participants:

All modules are the same for every participant, regardless of their background, skills, or level of study. We believe this approach is effective because the content delivered is unique to the study location, focusing on the architecture, culture, and environmental conditions of Bali, Indonesia, and Southeast Asia. These aspects provide new and enriching learning experiences for all participants, regardless of their prior knowledge or expertise. Therefore, we ensure that the content in all modules remains consistent for all participants, allowing everyone to engage with fresh and locally relevant material.

Differentiated Assessment in Studio Project:

However, in the Design Studio Project, the assessment will be tailored to each student's background and level of study. For example, a first-year student will have different project requirements and assessment criteria compared to a master's student or a professional. This ensures that students are assessed fairly based on their individual experience and academic level, while still challenging them to grow in their design skills.

GRADING AND CURRICULUM

Academic systems vary across countries. In Indonesia, tertiary education is overseen by the Ministry of Higher Education & Research. While the program does not grant a degree, it offers students up to 12 credit points (ECTS), transferable to home universities/schools. To earn the full 12 ECTS, students must actively participate in classes, guest lectures, academic excursions/site visits, and student projects.

A minimum attendance rate of 85% is required for eligibility to sit for exams. Absences of more than 3 days without notice will result in deregistration from the program. Attendance is mandatory starting from the first day of orientation.

CERTIFICATES

Students will receive their official certificates from IDB Bali during the farewell event, or digitally by email, approximately 4 weeks after the final exams. Upon successfully completing all course requirements, students will be awarded the following certificates:

- A certificate stating that the student has completed the full 4-week program.
- An Academic Transcript detailing the student's performance throughout the course, with final grades included.
- A certificate of participation in workshops and, upon request, specific academic excursions.





ELIGIBILITY

The Tropical Architecture Summer School program at IDB Bali is designed for a wide range of participants, welcoming both students and professionals who are passionate about architecture, interior design, and sustainable practices. Whether you're a student seeking academic enrichment or a professional looking to refine your design skills, this program offers valuable insights into tropical architecture and green design.

The program is open to:

- **Bachelor's or Master's Students:** Ideal for students in the fields of architecture, interior architecture, design, or related disciplines.
- **Professionals in Architecture or Design:** Perfect for those already working in architecture, interior design, or sustainable construction who wish to deepen their knowledge of tropical and green design principles.
- **Aspiring Architects and Designers:** Whether you're at the beginning of your design journey or looking to enhance your skills, this program provides practical experience and creative development opportunities.

Additionally, anyone with a strong interest in architecture or green design, even without formal training, is encouraged to apply. The program provides hands-on experience and a deep understanding of sustainable architecture, enriched by Bali's unique environmental and cultural context.

Participants will benefit most if they have experience or interest in:

- **Tropical Architecture and Design:** For those focused on creating structures that harmonize with tropical environments.
- **Sustainable Building Practices:** Ideal for those interested in using natural materials and eco-friendly methods in architectural design.
- **Interior Design:** A great fit for those looking to integrate sustainability with interior spaces, focusing on furniture design and interior architecture.
- **Green Design and Construction:** Suitable for individuals eager to learn about sustainable development and green design principles in tropical climates.

Whether you aim to create innovative design solutions or simply want to deepen your understanding of tropical architecture, this program offers the essential skills and knowledge needed to excel in today's environmentally conscious design landscape.



1. BALINESE LANDSCAPE AND ARCHITECTURE

Schedule	weekly
Workload	50-60 hours in total
Credit Points	2 CP
Department	Interior Design
Location	IDB Bali Campus

COURSE DESCRIPTION

This module provides an in-depth exploration of traditional Balinese architecture, often referred to as the architecture of the “Island of a Thousand Temples.” Bali’s architecture is a reflection of its vibrant culture, geography, and the deep-rooted Hindu belief system. Participants will gain insights into the philosophy, design principles, and elements that define Balinese architecture. The course also addresses the challenges of applying traditional Balinese architectural concepts in modern contexts, emphasizing the harmony between the built environment and nature.

LEARNING OBJECTIVES

- Understand the key principles and elements of traditional Balinese architecture.
- Analyze the relationship between Balinese architecture and the environment.
- Explore the influence of Tri Hita Karana on architectural designs.
- Compare Balinese architecture with other Southeast Asian architectural styles.
- Develop practical knowledge of how traditional concepts can be adapted to contemporary projects.

ASSESSMENT

The assessment for this module will consist of:

- Active participation in class discussions and workshops.
- Completion of site visit reports.
- Group presentations on assigned topics.
- Submission of a reflective essay on Balinese architectural principles.



2. BALI RESORT AND HOSPITALITY DESIGN

Schedule	weekly
Workload	50-60 hours in total
Credit Points	2 CP
Department	Interior Design
Location	IDB Bali Campus

COURSE DESCRIPTION

This module delves into the design of resorts and villas in Bali, with a focus on how these structures cater to the island's booming tourism industry. Participants will explore how Bali's cultural landscape and natural beauty influence resort and villa architecture, particularly in creating luxurious yet sustainable spaces. The module covers essential aspects of designing for hospitality, including how traditional Balinese elements are incorporated into modern resort and villa projects, which are primarily built for tourism purposes. Students will gain valuable insights into site planning, luxury facilities, and the integration of indoor-outdoor living spaces.

LEARNING OBJECTIVES

- Understand the key design principles behind Bali's resort and villa architecture for the tourism industry.
- Analyze how cultural and environmental factors shape hospitality designs.
- Explore the integration of traditional Balinese aesthetics with modern luxury and sustainability.
- Develop practical knowledge of resort and villa design, including layout, site planning, and guest experience.
- Gain exposure to case studies through site visits to leading resorts and villas in Bali.

ASSESSMENT

The assessment for this module will consist of:

- Participation in resort and villa site visits with reflective reports.
- Group project focusing on resort and villa design elements, incorporating traditional Balinese architecture.
- Oral presentation on selected case studies of resort and villa designs.
- Submission of a design proposal for a resort or villa project, reflecting the principles learned during the module.



3. GREEN DESIGN

Schedule	weekly
Workload	50-60 hours in total
Credit Points	2 CP
Department	Interior Design
Location	IDB Bali Campus

COURSE DESCRIPTION

This module focuses on sustainable and ecological design principles in the context of tropical architecture. Bali's commitment to sustainability, particularly through the use of natural materials like bamboo and wood, serves as the foundation for exploring green design. Participants will learn how to integrate environmentally friendly materials and methods into their architectural designs, with a focus on creating structures that blend seamlessly with the natural environment. The course will also highlight key concepts of ecological balance, energy efficiency, and the use of renewable resources in tropical climates.

LEARNING OBJECTIVES

- Understand the principles of green design and their application in tropical architecture.
- Learn how to utilize natural materials such as bamboo and wood in eco-friendly construction.
- Explore the balance between aesthetics, functionality, and sustainability in architectural projects.
- Develop practical knowledge of sustainable design techniques suited for tropical climates.
- Gain insights into case studies of green design in Bali, particularly those focusing on ecological balance and energy efficiency.

ASSESSMENT

The assessment for this module will consist of:

- Participation in green design workshops and site visits to sustainable building projects.
- Group project focusing on the implementation of green design principles in tropical architecture.
- Oral presentation on selected case studies of sustainable architectural projects in Bali.
- Submission of a green design proposal, incorporating sustainable materials and methods into a tropical context.



4. INTERIOR DESIGN & AMENITIES

Schedule	weekly
Workload	50-60 hours in total
Credit Points	2 CP
Department	Interior Design
Location	IDB Bali Campus

COURSE DESCRIPTION

This module explores the principles of interior design within the context of tropical architecture, with a focus on how interior spaces in Bali are designed to enhance both comfort and connection with nature. Participants will study the use of local materials, such as bamboo, rattan, and tropical wood, in creating sustainable and aesthetically pleasing interiors. The module also covers the integration of amenities in hospitality projects, ensuring that design enhances the guest experience while maintaining harmony with the surrounding environment.

LEARNING OBJECTIVES

- Understand the principles of tropical interior design and the use of local materials.
- Learn how to design functional and aesthetically pleasing interiors that enhance indoor-outdoor living.
- Explore the relationship between interior design and amenities in the context of hospitality projects.
- Develop practical knowledge of how to integrate sustainable materials into interior spaces.
- Gain insights from case studies of tropical interior designs in Bali, focusing on resorts and villas.

ASSESSMENT

The assessment for this module will consist of:

- Participation in interior design workshops and site visits to hospitality projects.
- Group project focused on the design of interior spaces and the integration of amenities.
- Oral presentation on selected case studies of tropical interior design in Bali.
- Submission of an interior design proposal, incorporating local materials and sustainable practices.



5. STUDIO PROJECT

Schedule	weekly
Workload	120 hours in total
Credit Points	4 CP
Department	Interior Design
Location	IDB Bali Campus

COURSE DESCRIPTION

The studio project serves as the centerpiece of the Tropical Architecture Summer School, allowing participants to apply the knowledge gained from each module into a comprehensive architectural project. Working in groups, students will design a hospitality or resort project, focusing on integrating traditional Balinese architecture, sustainable practices, and innovative design solutions. The theme of the studio project, “East Meets West,” challenges students to harmonize cultural elements with modern architectural needs. The project culminates in a final presentation where students showcase their designs.

LEARNING OBJECTIVES

- Apply the principles of tropical architecture, green design, and interior design to a practical project.
- Develop architectural concepts that balance cultural heritage with contemporary design.
- Work collaboratively to produce an architectural design that addresses real-world hospitality or resort needs.
- Enhance their ability to present architectural ideas clearly and professionally.
- Gain hands-on experience with the design process, from concept development to final presentation.

ASSESSMENT

The assessment for this module will consist of:

- Continuous assessment based on participation in group work and project development.
- Final presentation of the studio project, evaluated on creativity, integration of course principles, and design feasibility.
- Submission of a design portfolio that includes architectural drawings, diagrams, and project documentation.



ACCOMMODATION – OUR STUDENT VILLAS

For our short courses, we provide rooms in our student villas. Bookings are managed by our trusted partner in Bali, ensuring a smooth and comfortable stay during your time with us.

RIVERSIDE RETREAT

Bali Riverside Retreat in northern Canggu is a newly renovated, welcoming retreat with 13 luxurious bedrooms. Each room features a king-size bed, air conditioning, and an ensuite bathroom, ensuring comfort. Enjoy stunning rice terrace views on three sides of the property, a private pool with a U-shaped sitting corner, and an industrial design lounge area with a fully equipped kitchen. Conveniently located, it offers easy access to local shops, supermarkets, vibrant markets, and is just 14 minutes from Batu Bolong Beach, Canggu Beach, and Pererenan Beach.

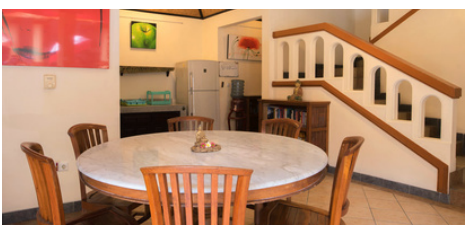
Price IDR 7,000,000 – 8,500,000/room/month



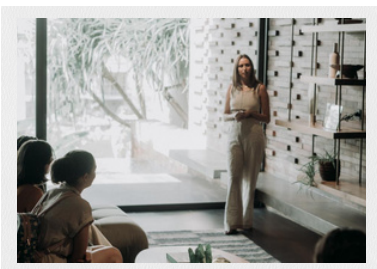
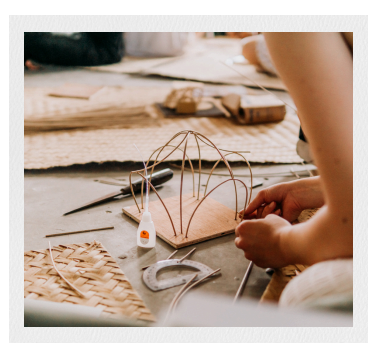
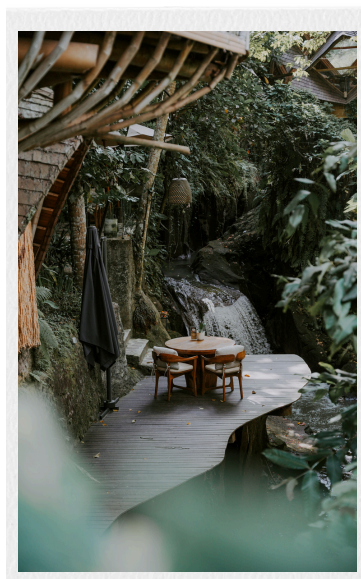
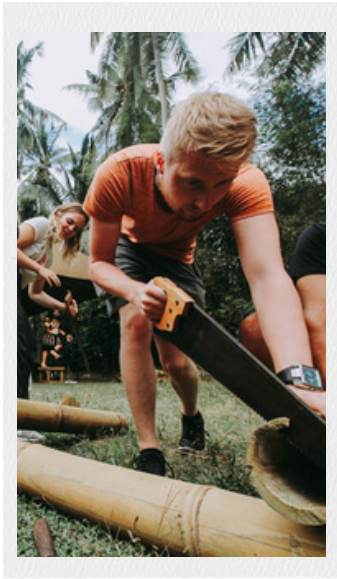
VILLA OASIS

Nestled in the serene Umalas region, Villa Oasis has been a favorite among students for years. This tranquil retreat offers 11 rooms (7 doubles, 4 singles) across three buildings, all centered around a shared swimming pool. Each room features a private, semi-open bathroom with eco-friendly solar-heated water, a wardrobe, study desk, and safety boxes for laptops and valuables.

Price IDR 6,000,000 – 8,000,000/room/month



*with a growing number of students during the application process, we may add more accommodation options to ensure availability for everyone









Contact Information

STUDYINBALI



Your journey begins with us! At StudyInBali, we're here to guide you through the entire process – from applications to personalized consultancy. We'll make sure everything is set before you embark on your adventure. Got questions about visas, registration, or study fees? We've got you covered – just reach out!

-  hello@studyinbali.com
-  www.studyinbali.com
-  +49 178 8189255 (WhatsApp)
-  @studyinbali

